

# Bloomsburg Area School District

---

## CAPITAL PROJECTS PRESENTATION





## AGENDA

- ATHLETIC FIELDS
- TEAM / FIELDHOUSE BUILDING
- NON-ATHLETIC SITE
- TECH ED / FITNESS / LOBBY ADDITION
- LOBBY / COMMONS ADDITION
- HIGH SCHOOL KITCHEN SERVERY
- AUDITORIUM LOBBY - INTERIOR RENOVATIONS
- HIGH SCHOOL SECURE ENTRY / BAND - INTERIOR RENOVATIONS
- ROOM RECONFIGURATION – INTERIOR RENOVATIONS
- MIDDLE SCHOOL SECURE ENTRY – INTERIOR RENOVATIONS
- COMMENTS + QUESTIONS

# ATHLETIC FIELDS

---

# ATHLETIC FIELDS | BASEBALL + SOFTBALL



Bloomsburg Area  
High School

Stadium Renovations  
and  
New Multi-Purpose Fields  
Overall Plan View





# ATHLETIC FIELDS | BASEBALL + SOFTBALL



Bloomsburg Area High School

New Multi-Purpose Fields

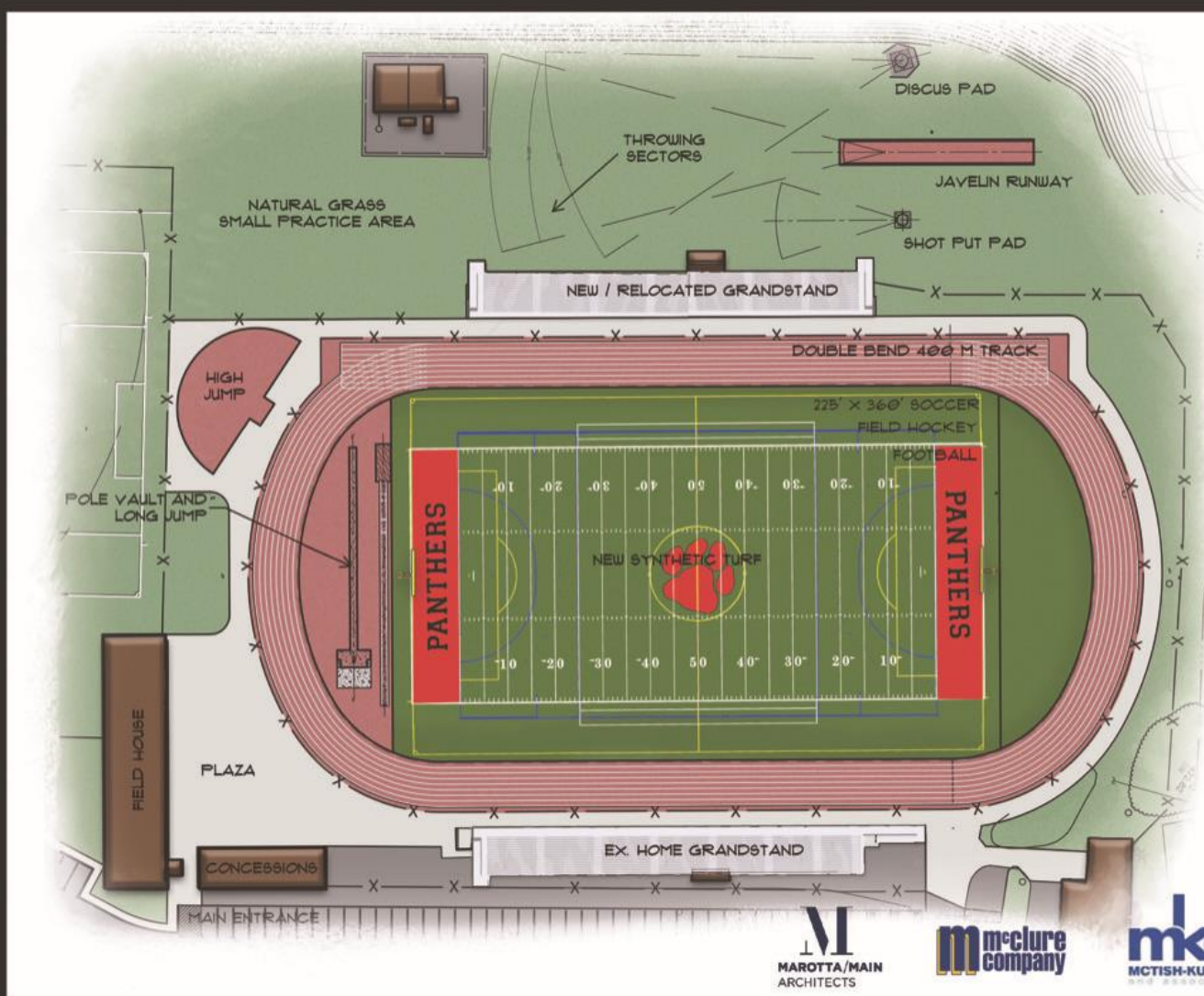


# ATHLETIC FIELDS | STADIUM LAYOUT



Bloomsburg Area High School

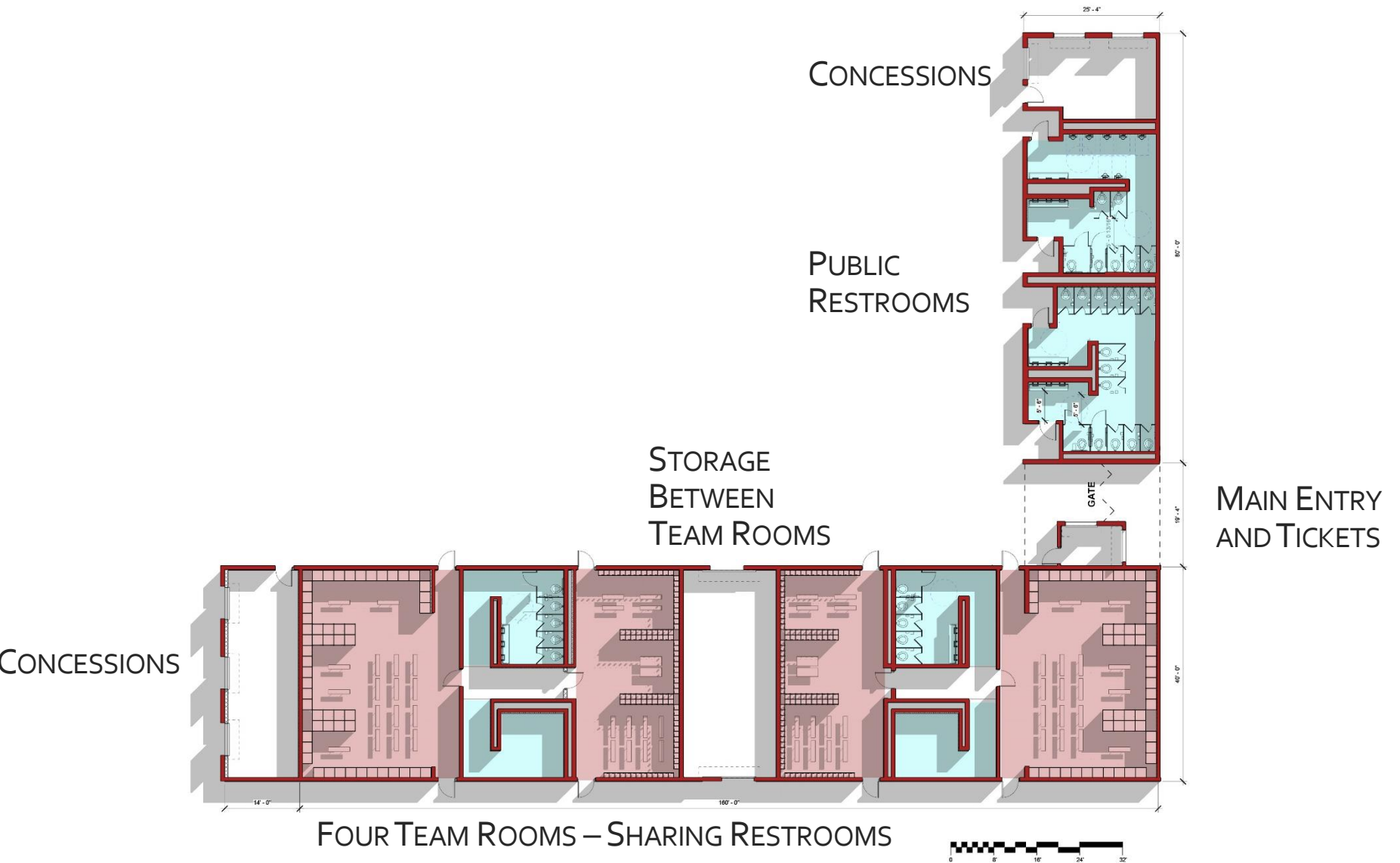
Stadium Renovations



# TEAM / FIELDHOUSE BUILDING

---

# TEAM / FIELDHOUSE BUILDING





# NON-ATHLETIC SITE

---

# NON-ATHLETIC SITE



PRE: 290 SPACES

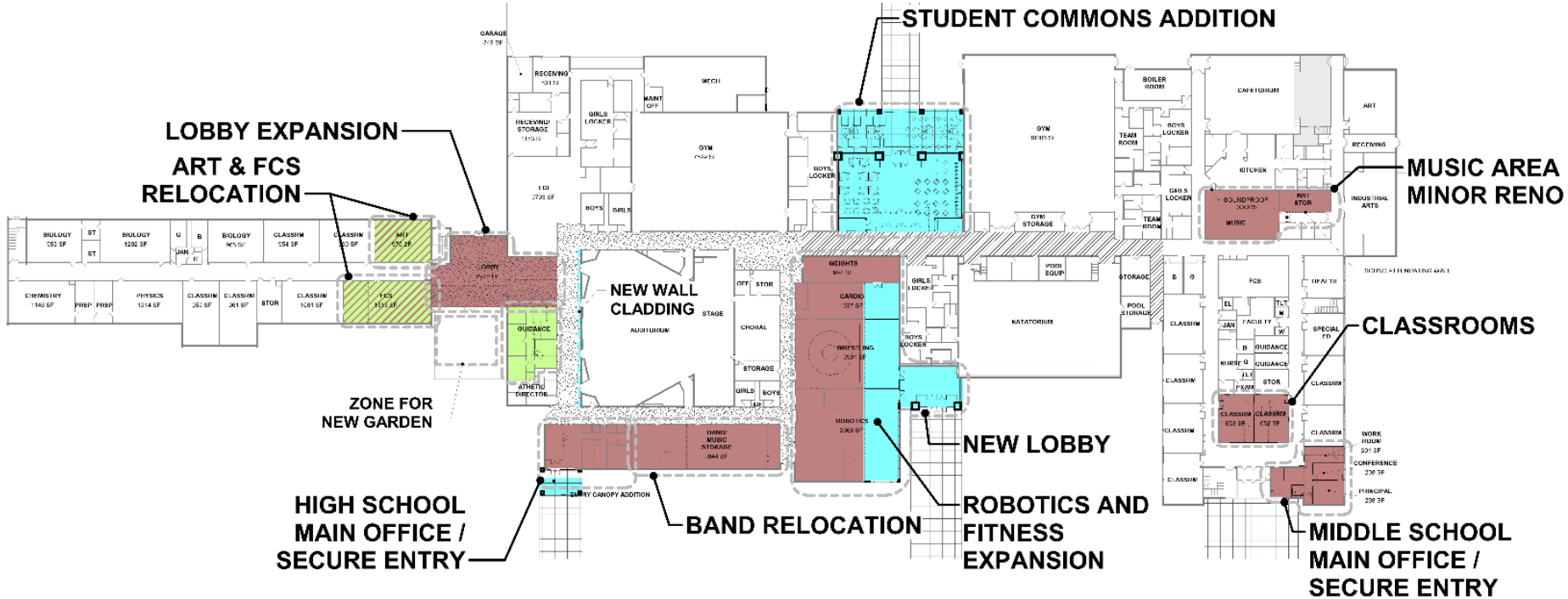
POST: 219 INSIDE LEVEL (8 ACCESSIBLE)  
 15 IN FRONT OF MIDDLE SCHOOL (2 ACCESSIBLE)  
 144 OUTSIDE LEVEL  
**378 TOTAL**

DATE: 01/17/2016	BY: ELS	<b>MAROTTAMAIN ARCHITECTS</b> BLOOMSBURG AREA SCHOOL DISTRICT TOWN OF BLOOMSBURG, CO. JEFFERSON COUNTY CO-MONROE, PA 17033-1000	<b>mka</b> MCTISH-KUNKEL AND ASSOCIATES 1500 SYCAMORE ROAD MONTGOMERY, PA 17754 717-368-3040 FAX 717-368-3166	CONCEPTUAL 1/17/2016
SCALE: 3/8" = 1'-0"	PROJECT: 47K			

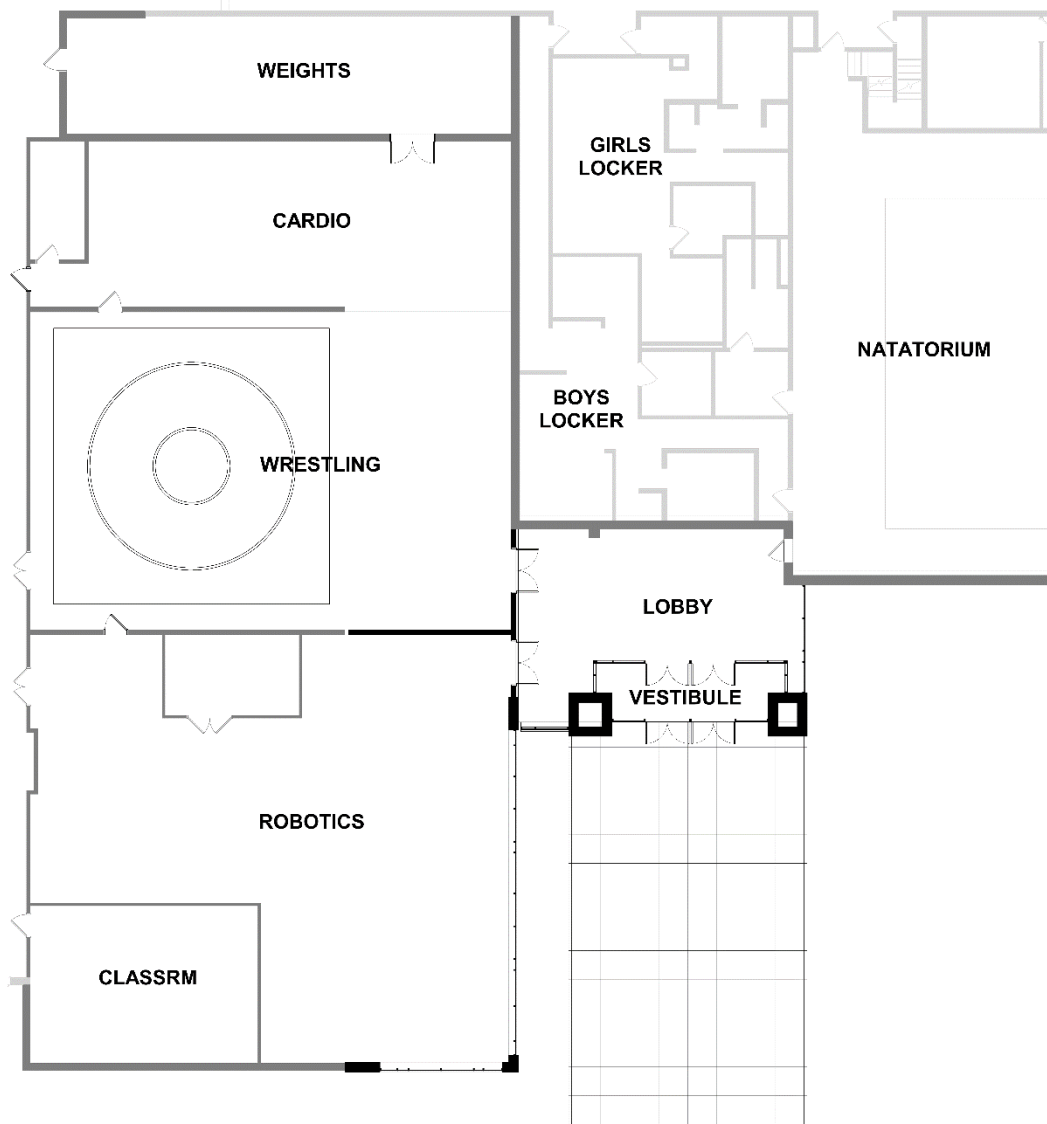
# TECH ED / FITNESS / LOBBY ADDITION

---

# TECH ED / FITNESS / LOBBY ADDITION



# TECH ED / FITNESS / LOBBY ADDITION





# TECH ED / FITNESS / LOBBY ADDITION

---



# TECH ED / FITNESS / LOBBY ADDITION

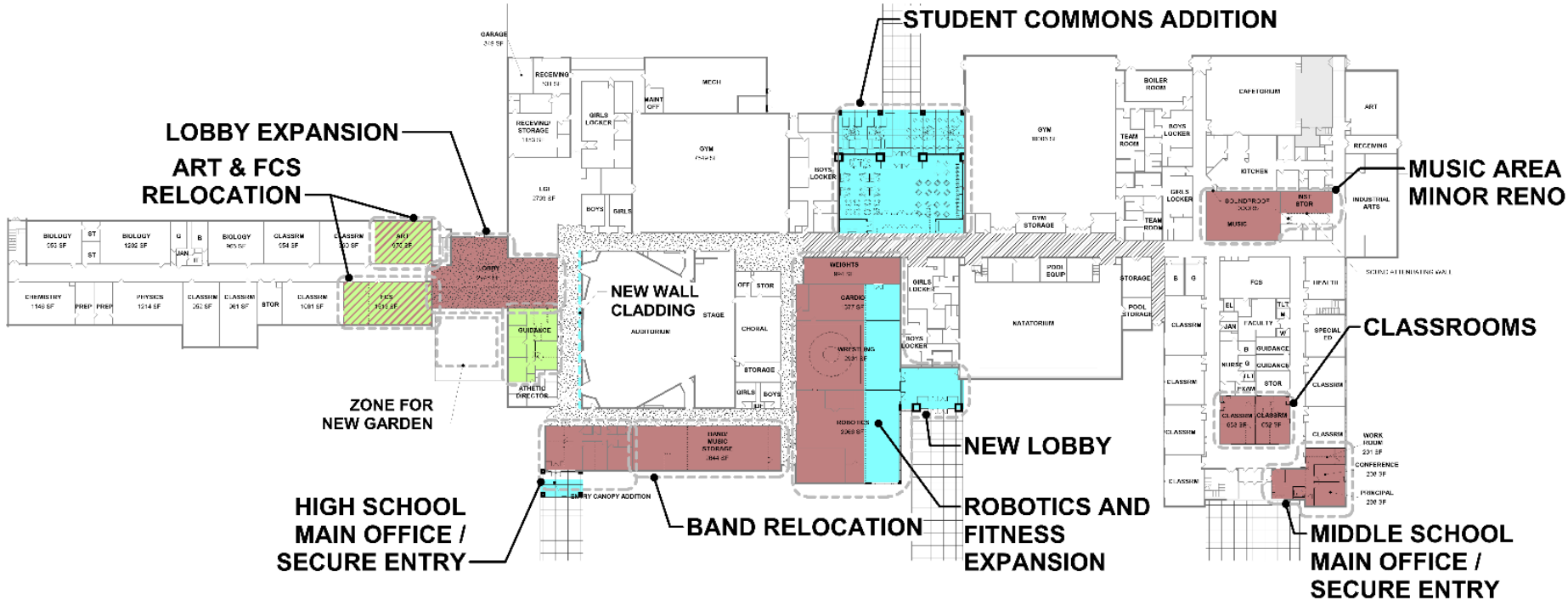
---



# LOBBY / COMMONS ADDITION

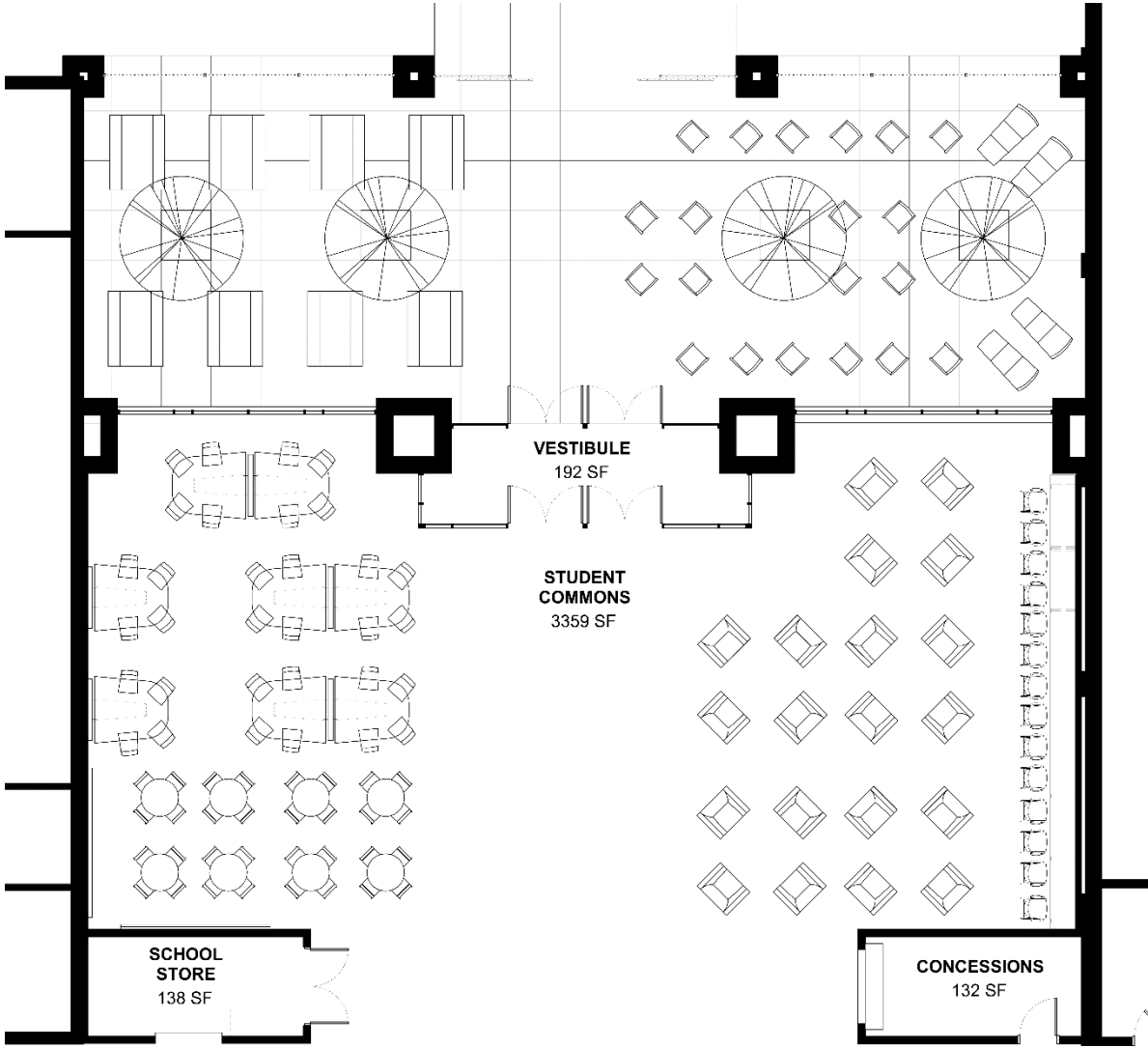
---

# LOBBY / COMMONS ADDITION





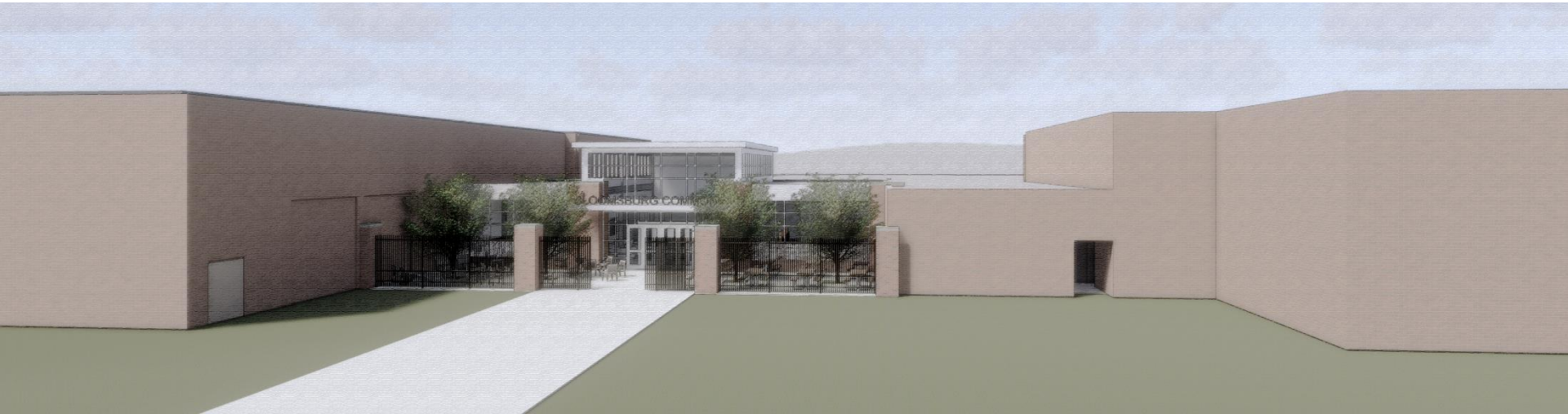
# LOBBY / COMMONS ADDITION





# LOBBY / COMMONS ADDITION | EXTERIOR

---



# LOBBY / COMMONS ADDITION | EXTERIOR





# LOBBY / COMMONS ADDITION | EXTERIOR





# LOBBY / COMMONS ADDITION | INTERIOR



# LOBBY / COMMONS ADDITION | INTERIOR





# LOBBY / COMMONS ADDITION | INTERIOR



# LOBBY / COMMONS ADDITION | INTERIOR





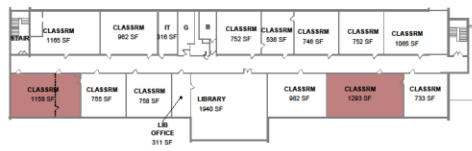
# LOBBY / COMMONS ADDITION | INTERIOR



# HIGH SCHOOL KITCHEN SERVERY

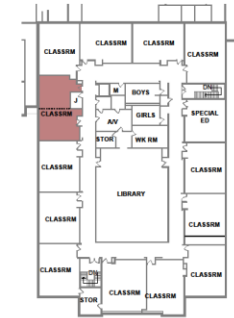
---

# HIGH SCHOOL KITCHEN SERVERY

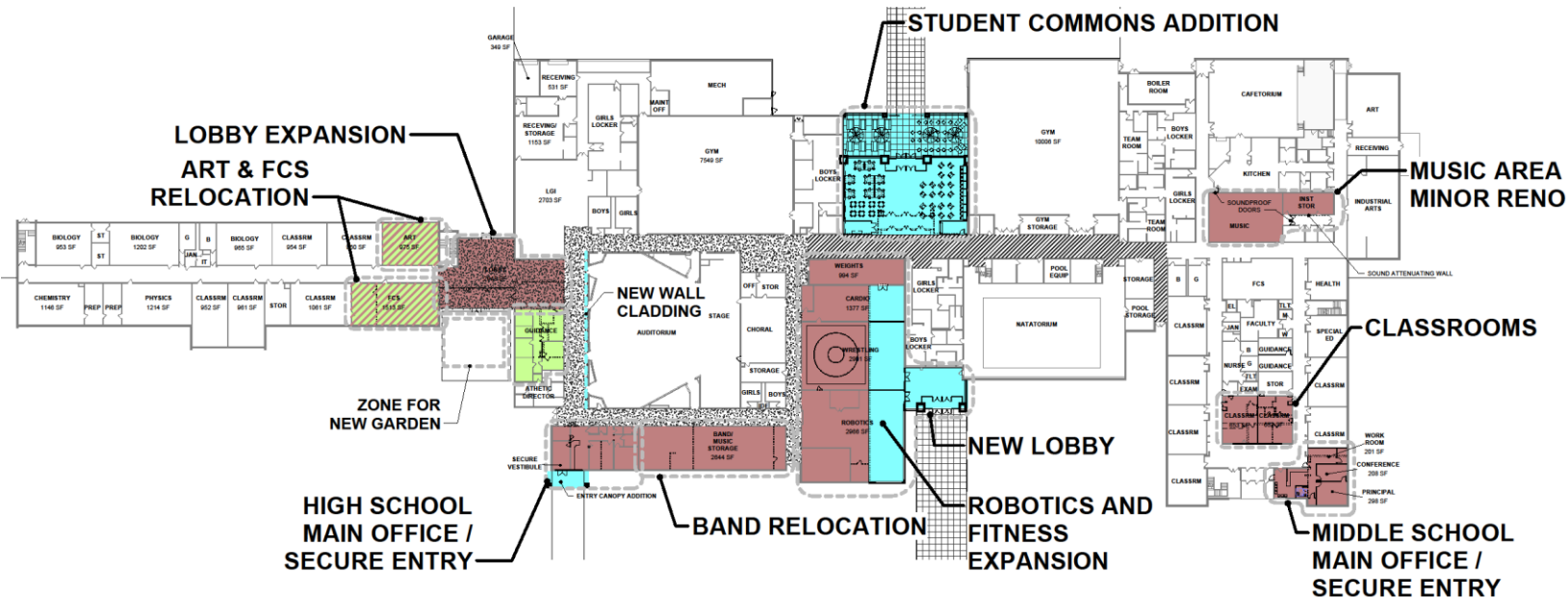


3 SECOND FLOOR PLAN - HS  
 (ROT.1) 1" = 30'-0"

- ADDITION
- RENOVATION
- PROGRAMMING



2 SECOND FLOOR PLAN - MS  
 (ROT.1) 1" = 30'-0"





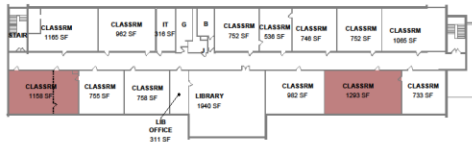
# HIGH SCHOOL KITCHEN SERVERY



# AUDITORIUM LOBBY - INTERIOR RENOVATIONS

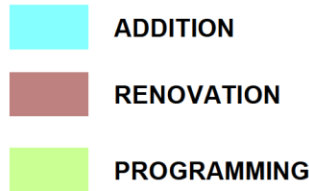
---

# AUDITORIUM LOBBY - INTERIOR RENOVATIONS



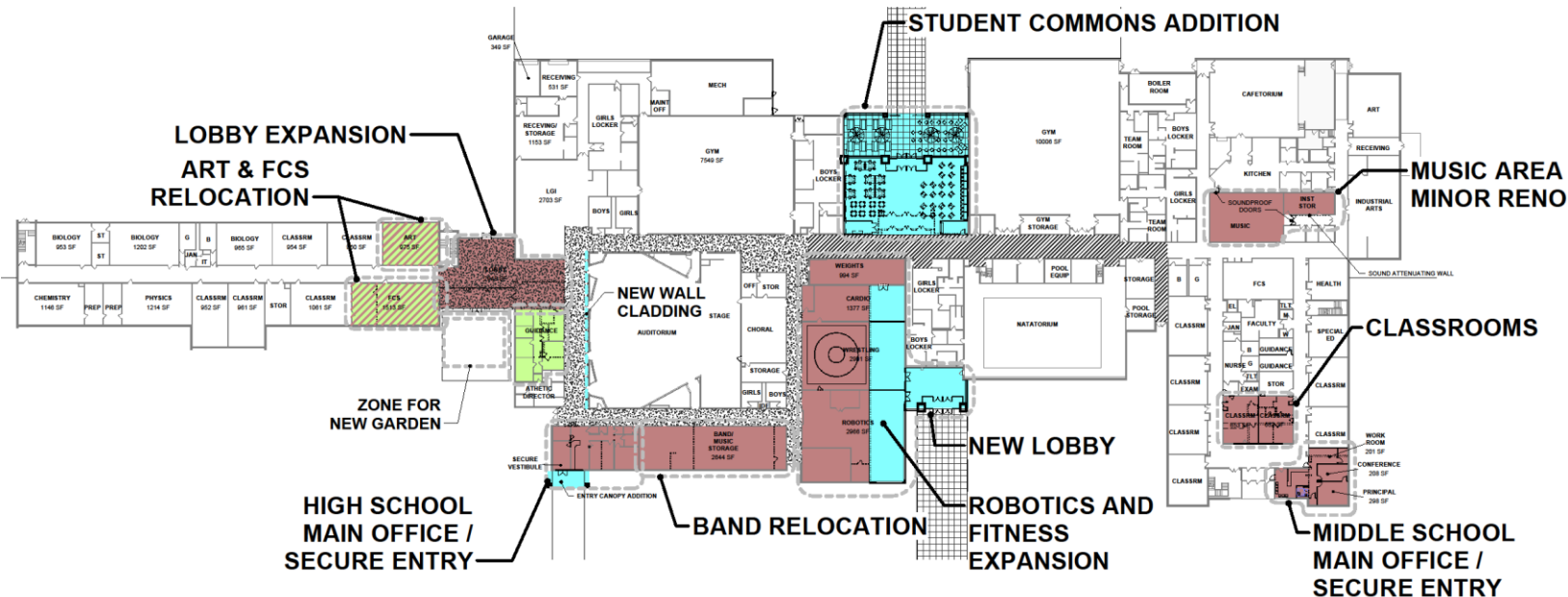
3 SECOND FLOOR PLAN - HS

SD1.1 1" = 30'-0"



2 SECOND FLOOR PLAN - MS

SD1.1 1" = 30'-0"



# AUDITORIUM LOBBY - INTERIOR RENOVATIONS



# AUDITORIUM LOBBY - INTERIOR RENOVATIONS

---

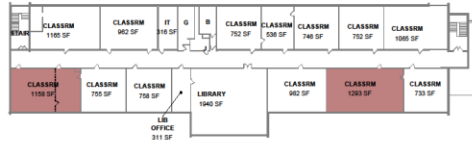




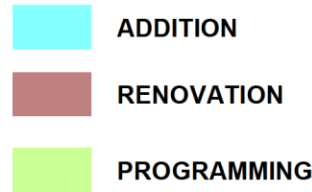
# HIGH SCHOOL SECURE ENTRY / BAND INTERIOR RENOVATIONS

---

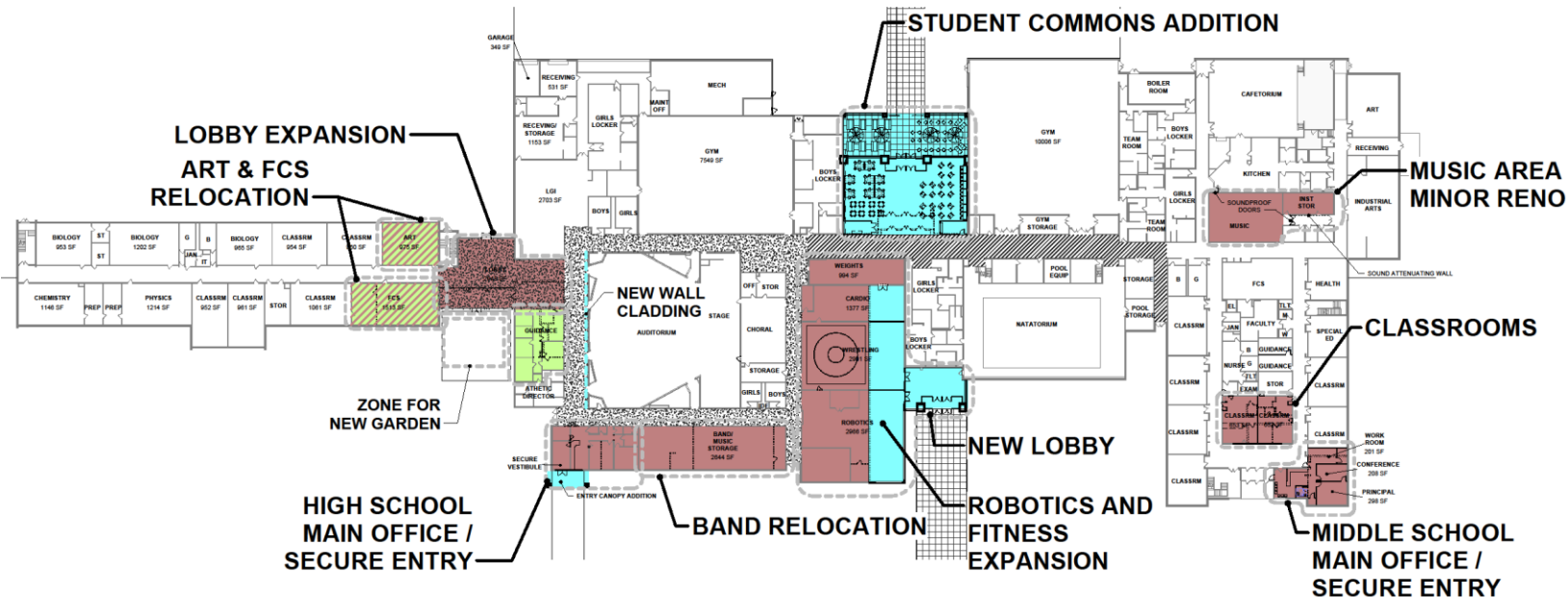
# HIGH SCHOOL SECURE ENTRY / BAND - INTERIOR RENOVATIONS



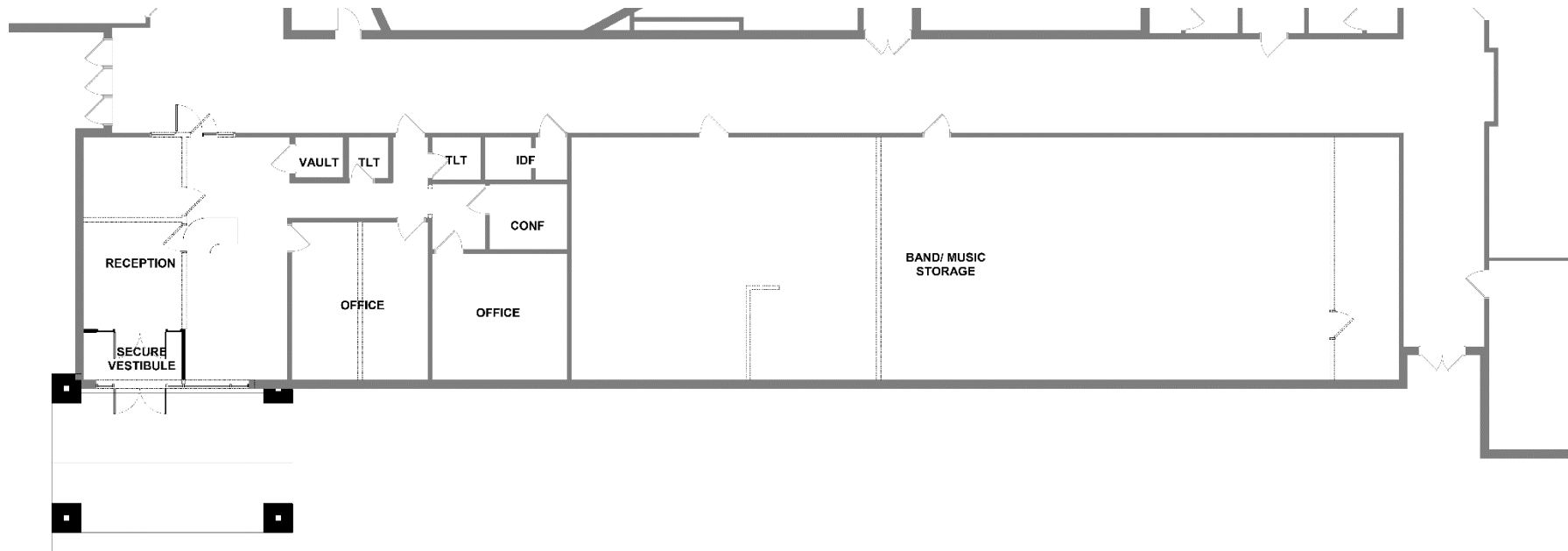
3 SECOND FLOOR PLAN - HS  
S01.1 1" = 30'-0"



2 SECOND FLOOR PLAN - MS  
S01.1 1" = 30'-0"



# HIGH SCHOOL SECURE ENTRY / BAND - INTERIOR RENOVATIONS



# HIGH SCHOOL SECURE ENTRY / BAND - INTERIOR RENOVATIONS

---



# HIGH SCHOOL SECURE ENTRY / BAND - INTERIOR RENOVATIONS

---



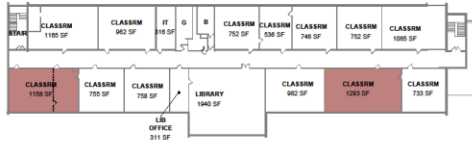


# ROOM RECONFIGURATION

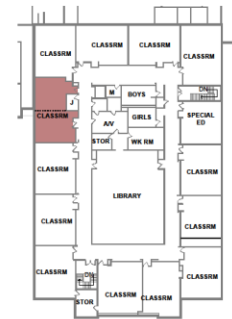
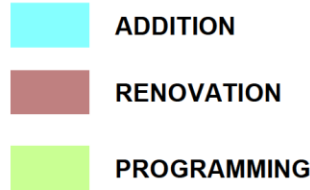
## INTERIOR RENOVATIONS

---

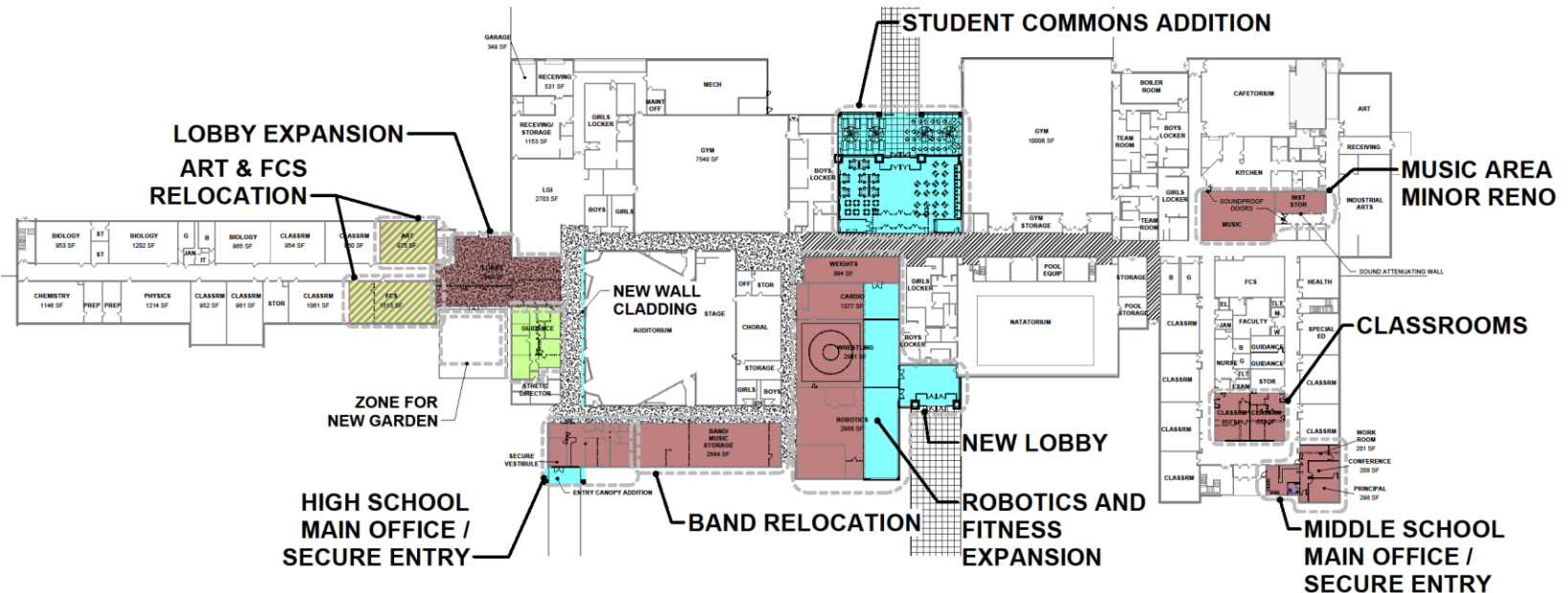
# ROOM RECONFIGURATION – INTERIOR RENOVATIONS



3 SECOND FLOOR PLAN - HS  
SOT 17 1" = 30'-0"



2 SECOND FLOOR PLAN - MS  
SOT 17 1" = 30'-0"

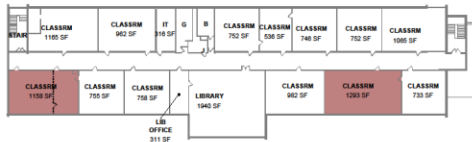


# MIDDLE SCHOOL SECURE ENTRY

## INTERIOR RENOVATIONS

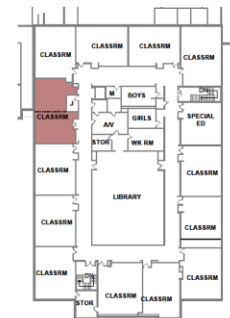
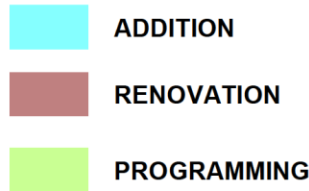
---

# MIDDLE SCHOOL SECURE ENTRY – INTERIOR RENOVATIONS



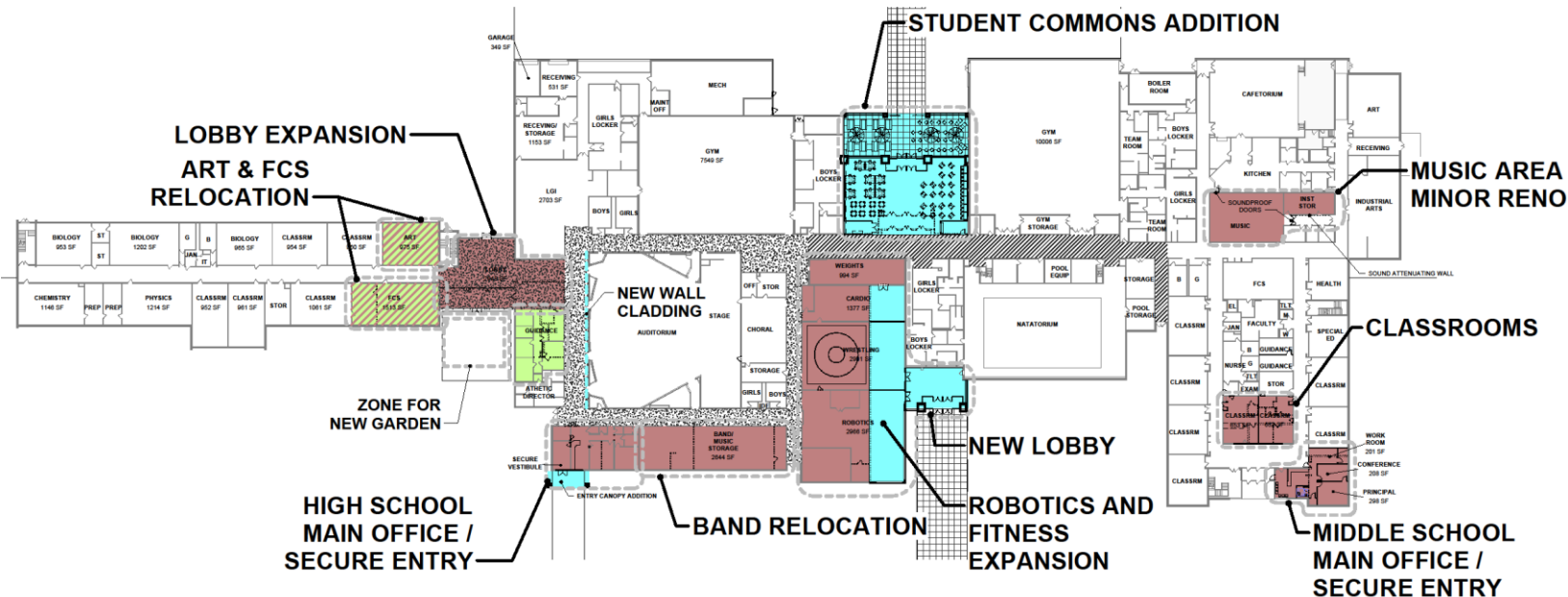
3 SECOND FLOOR PLAN - HS

801.1 1" = 30'-0"



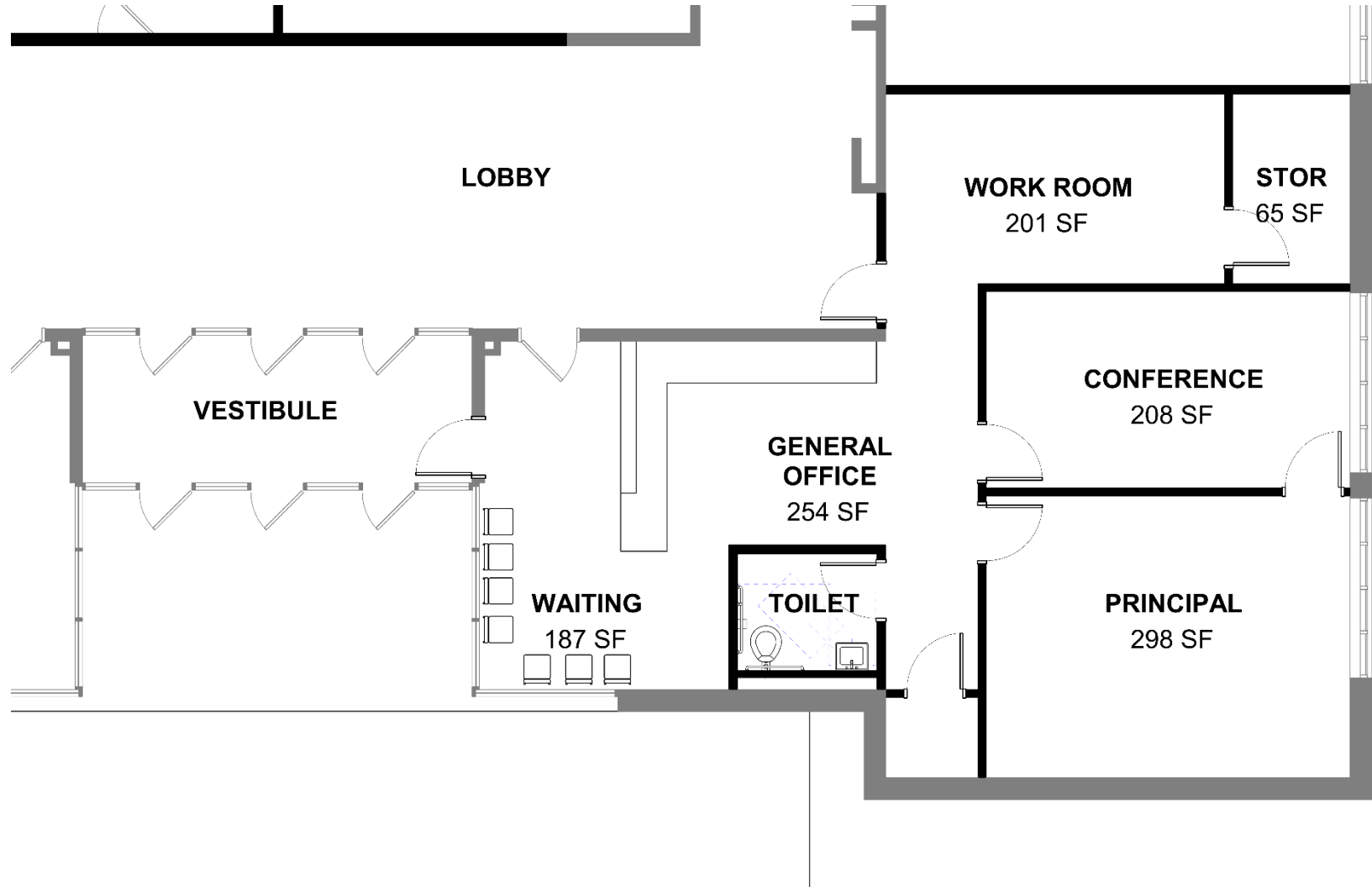
2 SECOND FLOOR PLAN - MS

801.1 1" = 30'-0"





# MIDDLE SCHOOL SECURE ENTRY – INTERIOR RENOVATIONS



# Comments + Questions

---

*Thank you.*

## Bloomensburg Area School District

*The mission of the Bloomensburg Area School District is to prepare its students to become contributing, responsible citizens and life-long learners with the ability to adapt and to succeed in a competitive world.*

